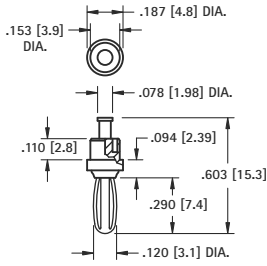


MINIATURE PLUGS

SWAGE MOUNT



.120 (3.0) Plug



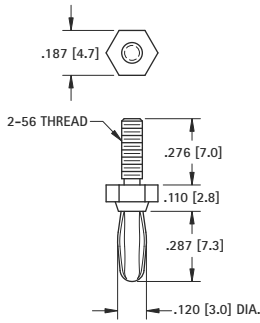
MATERIAL:
Spring: Beryllium Copper
Body: Brass, Silver Plate

CAT. NO. 452

THREADED



CAT. NO. 450

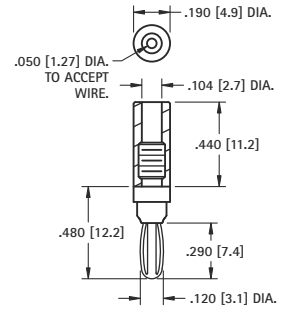


MATERIAL:
Spring: Beryllium Copper, Nickel Plate
Body: Brass, Silver Plate

SOLDER CONNECTION



.120 (3.0) Plug



CAT. NO.	COLOR
6076	RED
6077	BLACK
451	NONE

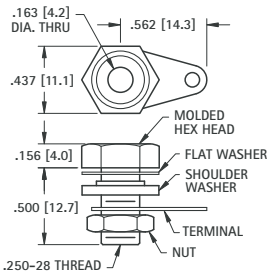
MATERIAL:
Spring: Beryllium Copper, Nickel Plate
Body: Brass, Nickel Plate
Handle: Nylon

BANANA JACKS

INSULATED SOLDER CONNECTION



Accepts .175 (4.5) Plug



Supplied with hardware
 Unassembled

CAT. NO.	HEAD COLOR
6093	RED
6094	BLACK

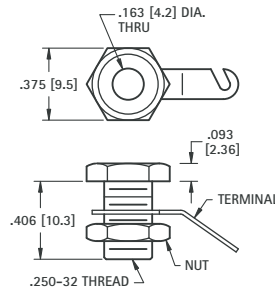
MATERIAL:
Body: Brass, Nickel Plate
Terminal: Copper, Tinned
Hex Head: Phenolic

NON-INSULATED RECESSED HEAD

Fits panel up to .312 (7.9)



Accepts .175 (4.5) Plug



Supplied with nut and lug.
 Unassembled

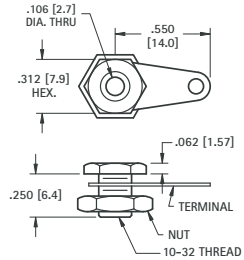
CAT. NO. 6095

MATERIAL:
Current Rating: 15 Amps
Body: Brass, Nickel Plate
Terminal: Brass, Tin Plate

NON-INSULATED MINIATURE JACK



Accepts .120 (3.0) Plug

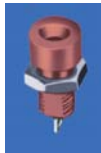


Supplied with lug and nut.
 Unassembled

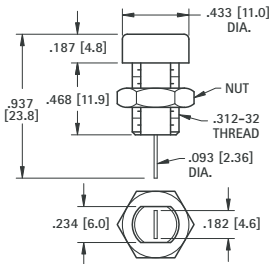
CAT. NO. 6090

MATERIAL:
Body: Brass, Nickel Plate
Terminal: Copper, Tinned

FULLY INSULATED



Accepts .175 (4.5) Plug



CAT. NO.	COLOR
6091	RED
6092	BLACK

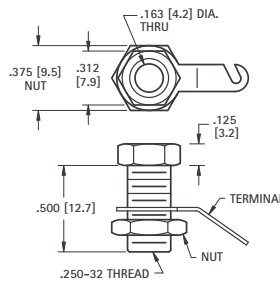
MATERIAL:
Body: Nylon
Contact: Brass, Tin Plate

NON-INSULATED STANDARD HEAD

Fits panel up to .375 (9.6)



Accepts .175 (4.5) Plug



Supplied with nut and lug.
 Unassembled

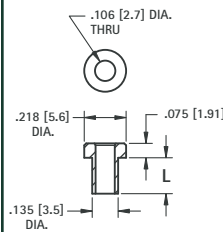
CAT. NO. 6096

MATERIAL:
Current Rating: 15 Amps
Body: Brass, Nickel Plate
Terminal: Brass, Tin Plate

NON-INSULATED

MINIATURE

Accepts .120 (3.0) Plug

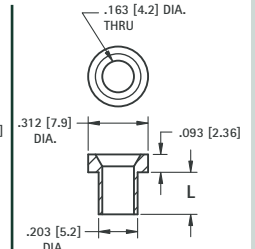


MATERIAL:
 Brass, Tin Plate

CAT. NO.	L
476-2	.125 (3.2)
476-3	.165 (4.2)
476-4	.187 (4.7)

STANDARD

Accepts .175 (4.5) Plug



MATERIAL:
 Brass, Nickel Plate

CAT. NO.	L
575-4	.218 (5.5)
575-6	.265 (6.7)
575-8	.350 (8.9)